

NOTICE OF CONSTRUCTION




Loafer Mountain Parkway

The Utah County Board of County Commissioners is pleased to announce the beginning of construction on Loafer Mountain Parkway.

The project has been awarded to Kenny Seng Construction, and work will begin as early as Monday, November 14. Construction will take place in several stages, including the reconstruction of a segment of Elk Ridge Drive, with project completion anticipated for Summer 2024.

Over the next several months, most work will concentrate between SR-164 and SR-198. During this first phase, crews will be placing road base material, rerouting irrigation, and developing the wetland mitigation site. **Nearby residents should expect an increase of traffic, heavy construction vehicles, and construction personnel in the area - particularly along Beet Road between Center Street and Arrowhead Trail.**

Legend:

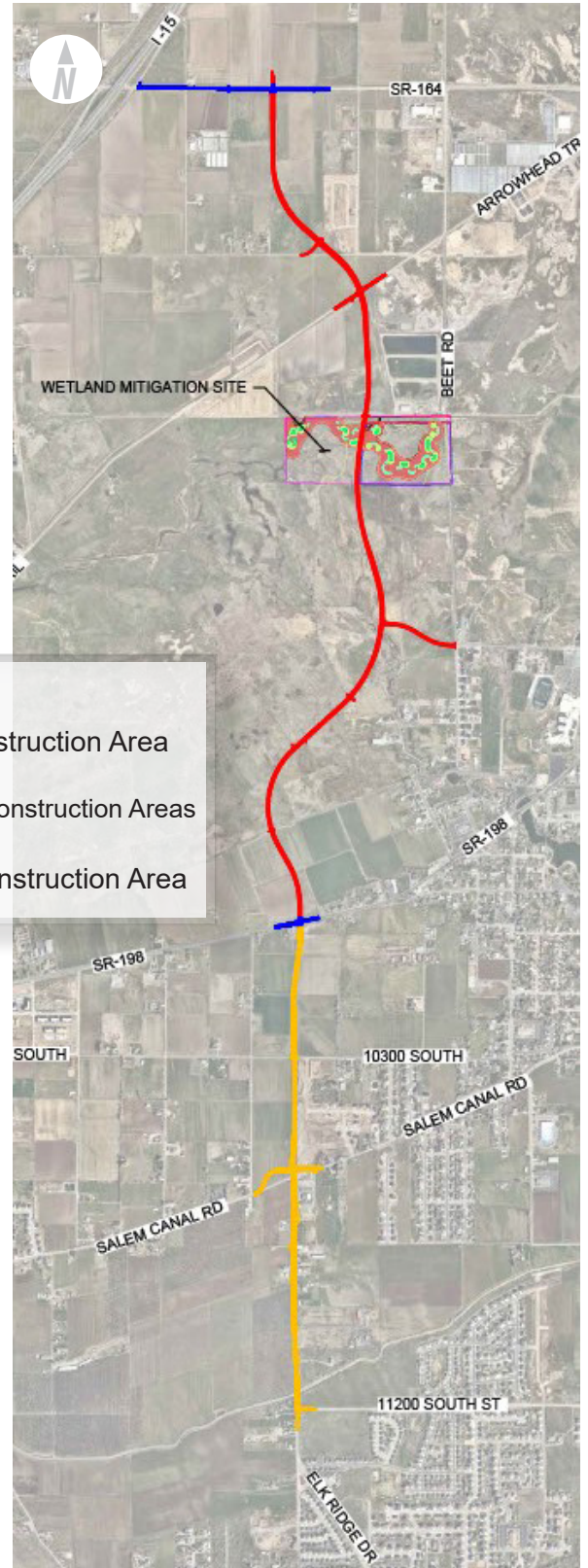
-  New Road Construction Area
-  UDOT Road Reconstruction Areas
-  Elk Ridge Reconstruction Area

Please use extra caution when walking or driving in the area, and make eye contact with equipment operators to ensure that they see you.

Work will typically take place between the hours of 7 a.m. and 7 p.m., Monday through Saturday. Sunday work may take place on occasion if needed.

Construction schedules are subject to change. If you have questions or concerns, please contact the project team using the contact information below.

Sign up for email updates by sending us an email with "Updates" in the subject line!



Questions? Concerns? Contact Us.

Email: loafermountainparkway@gmail.com

Hotline: 877-495-4240

