



Upcoming Work Activities

- Pipe work continues to be the number one priority on this project, as crews are aiming to have all of the irrigation piping done by April 1st, 2023, to accommodate the start of the irrigation season. There has been a lot of progress made over the past month, and Kenny Seng Construction is confident that they will hit that deadline.
- The team has completed bringing in all of the dirt that will serve as the bottom layer of the new road! This is an exciting milestone for the project! Over 320,000 tons of material were placed.



- Storm drain work will continue over the next several months, as crews install all of the pieces to ensure that Loafer Mountain Parkway can properly drain water when it's finished. Roadway drainage is a very important part of motorist safety. To date, crews have installed approximately 7,000 feet of irrigation and storm drain pipe.
- The team continues to monitor the segments of the new roadway that are currently in a **settlement period* to ensure that the soil is settling as expected. Once it is determined that sufficient settlement has taken

place, the extra material will be spread out to other sections of the road to complete the subgrade.

- Over the next several months, crews will continue to install fencing and access gates for the private properties surrounding the new road on an intermittent basis.

****What is a settlement period?***

In designated wetland areas, it is common to find unstable soil conditions. If a new road was built on top of these unstable soils, it would eventually start to sink causing the road to crack or pothole quicker than the normal wear and tear. To prevent this from happening, crews place a layer of road base in those areas and let that settle for a period of several months before the new road is constructed. The road base will push out the ground water as it settles which will ultimately provide a steady surface for the new road to be built on.

Work hours will typically be Monday through Saturday, between 7 a.m. and 7 p.m. Sunday work may take place on occasion if needed.

Schedule subject to change due to weather or other unforeseen circumstances.



Traffic Alerts

- Nearby residents should expect an increase of traffic, slow-moving and heavy construction vehicles, and construction personnel in the area - particularly along Beet Road/460 West and Arrowhead Trail.

Safety

- Please use extra caution when walking or driving in the area and make eye contact with equipment operators to ensure that they see you.



Contractor's Note

"The moisture that we have been blessed with recently has created some challenges for building Loafer Mountain Parkway. Despite the conditions, our crews have continued to work hard to the point that we can say that we have made great progress on the project. Our focus prior to April 1st is to complete the new irrigation system, which is being upgraded along the Parkway. Kenny Seng Construction is grateful to all parties involved with, and affected by, the construction of this project and we will continue to work hard to deliver a quality project that everyone can be proud of." - Rick Richards, Project Manager

Questions? Concerns?

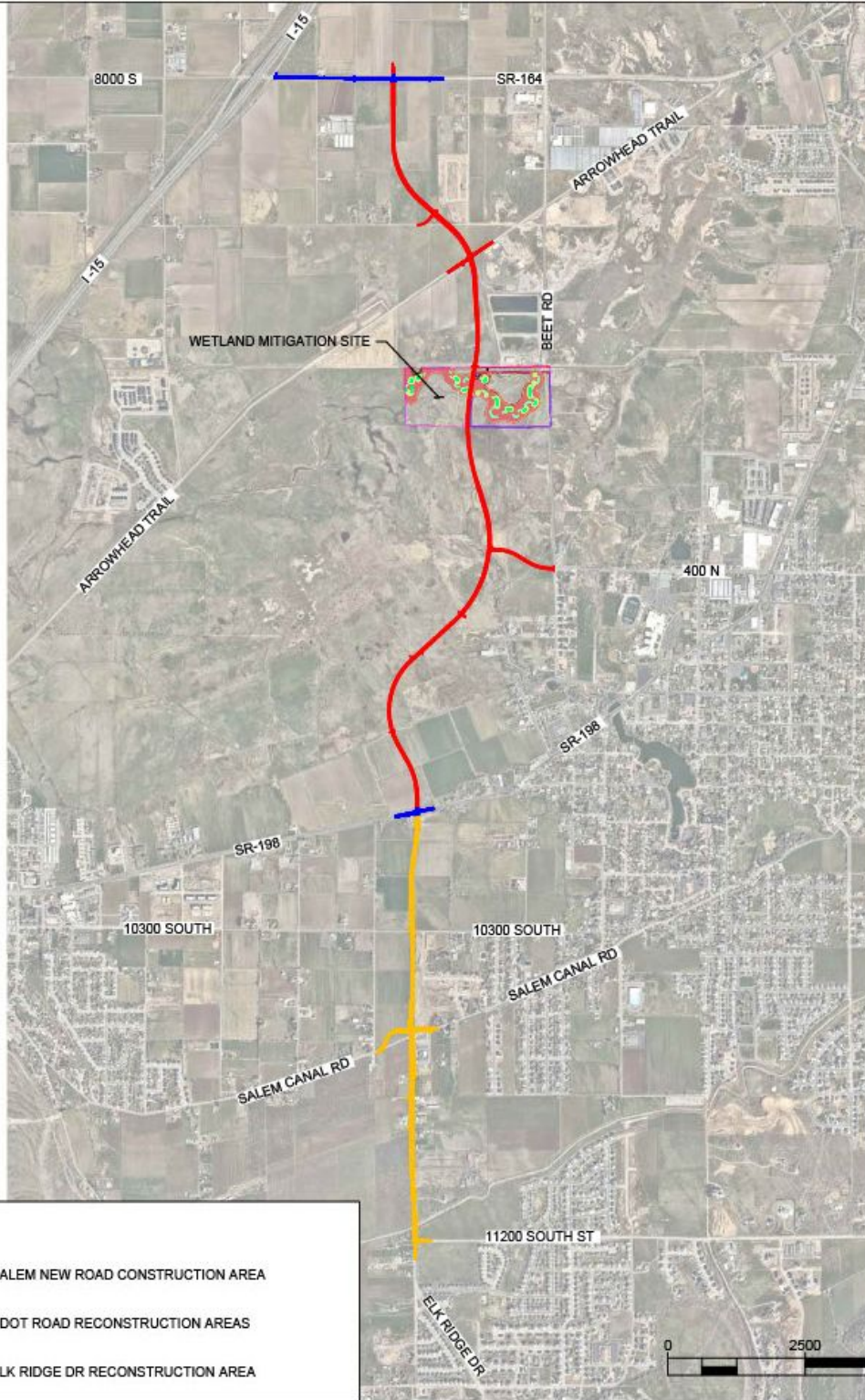
Email: loafermountainparkway@gmail.com

Hotline: 877-495-4240

Project Background

The Utah County Board of County Commissioners is pleased to announce the construction of the new Loafer Mountain parkway. Construction will take place in several stages, including the reconstruction of a segment of Elk Ridge Drive, with project completion anticipated for Summer 2024.

(Click project map below to enlarge)



LEGEND:

- SALEM NEW ROAD CONSTRUCTION AREA
- UDOT ROAD RECONSTRUCTION AREAS
- ELK RIDGE DR RECONSTRUCTION AREA

