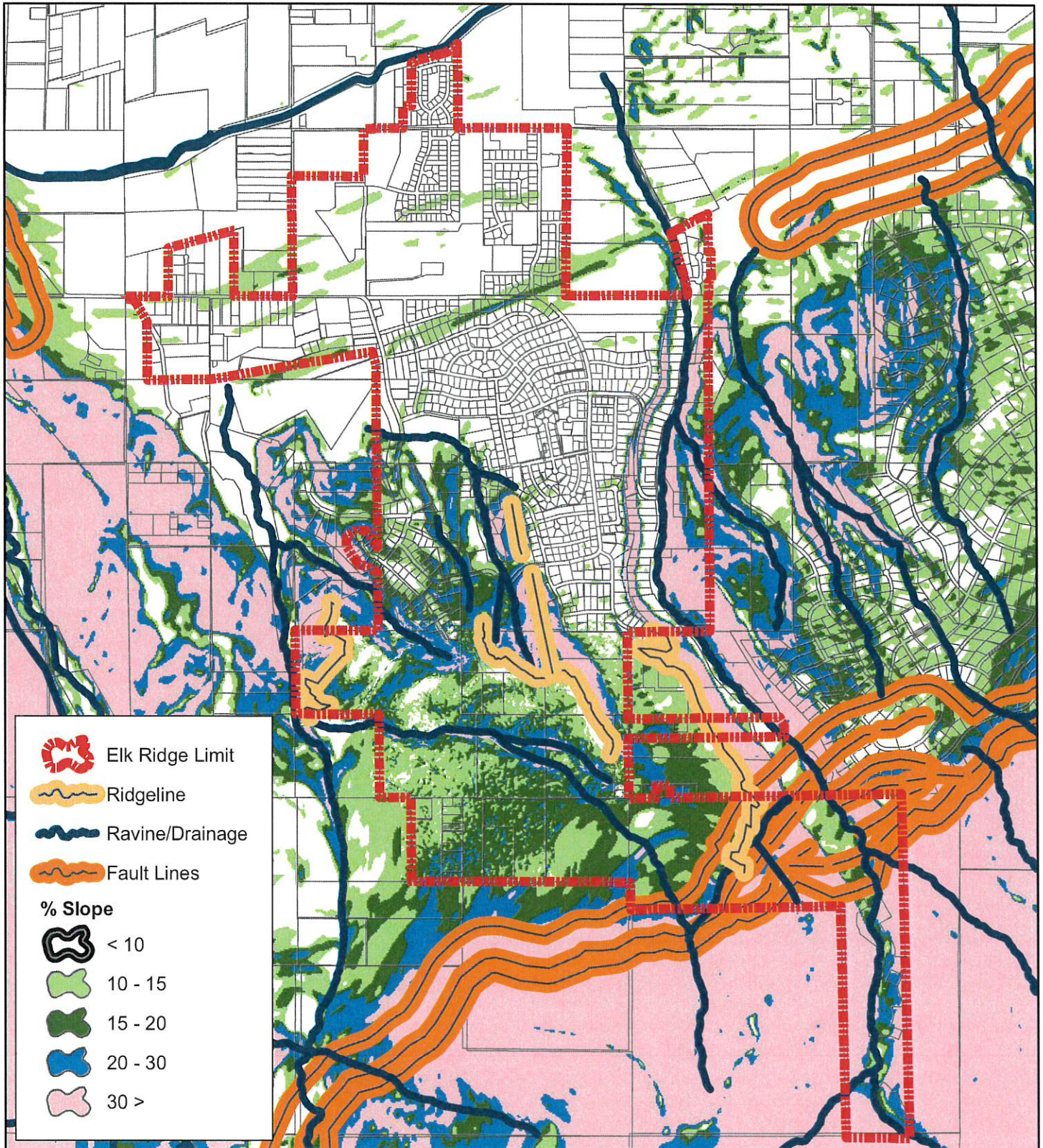


Sensitive Areas Map

Final City Council Approval = 23 Sept 2008

Map Produced by Mountainland GIS Department
Map Production Date: January 2010



This map is for reference only.
Development setbacks from sensitive areas shall be delineated when required detailed work is done at the development stage.
All Ravines/Drainage, Fault Lines, Ridgelines and 30% slopes shall also be considered Wildlife Corridors.