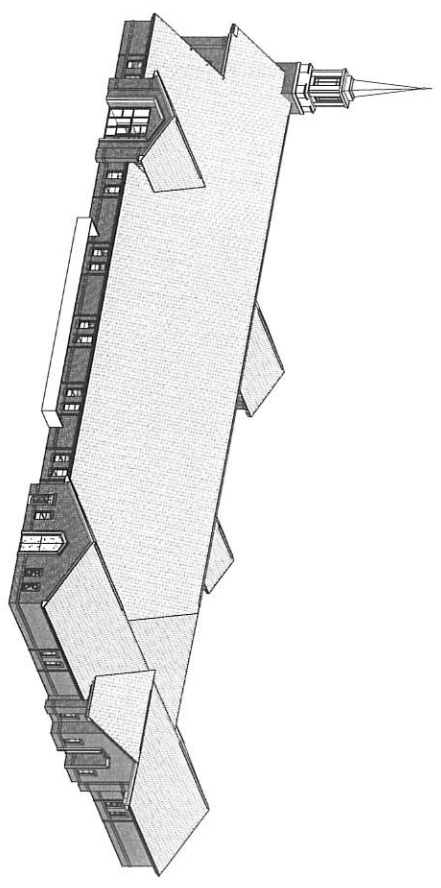


ELK RIDGE UT HERITAGE 23-2

CHURCH OF JESUS CHRIST OF LATTER DAY SAINTS
PROJECT NUMBER: #501-2698



VICINITY MAP



SHEET INDEX

GENERAL	COVER	SECTION AND DETAIL VIEWS
CV	COVER	CS13
CV	COVER	CS14
CV	COVER	CS15
CV	COVER	CS16
CV	COVER	CS17
CV	COVER	CS18
CV	COVER	CS19
CV	COVER	CS20
CV	COVER	CS21
CV	COVER	CS22
CV	COVER	CS23
CV	COVER	CS24
CV	COVER	CS25
CV	COVER	CS26
CV	COVER	CS27
CV	COVER	CS28
CV	COVER	CS29
CV	COVER	CS30
CV	COVER	CS31
CV	COVER	CS32
CV	COVER	CS33
CV	COVER	CS34
CV	COVER	CS35
CV	COVER	CS36
CV	COVER	CS37
CV	COVER	CS38
CV	COVER	CS39
CV	COVER	CS40
CV	COVER	CS41
CV	COVER	CS42
CV	COVER	CS43
CV	COVER	CS44
CV	COVER	CS45
CV	COVER	CS46
CV	COVER	CS47
CV	COVER	CS48
CV	COVER	CS49
CV	COVER	CS50
CV	COVER	CS51
CV	COVER	CS52
CV	COVER	CS53
CV	COVER	CS54
CV	COVER	CS55
CV	COVER	CS56
CV	COVER	CS57
CV	COVER	CS58
CV	COVER	CS59
CV	COVER	CS60
CV	COVER	CS61
CV	COVER	CS62
CV	COVER	CS63
CV	COVER	CS64
CV	COVER	CS65
CV	COVER	CS66
CV	COVER	CS67
CV	COVER	CS68
CV	COVER	CS69
CV	COVER	CS70
CV	COVER	CS71
CV	COVER	CS72
CV	COVER	CS73
CV	COVER	CS74
CV	COVER	CS75
CV	COVER	CS76
CV	COVER	CS77
CV	COVER	CS78
CV	COVER	CS79
CV	COVER	CS80
CV	COVER	CS81
CV	COVER	CS82
CV	COVER	CS83
CV	COVER	CS84
CV	COVER	CS85
CV	COVER	CS86
CV	COVER	CS87
CV	COVER	CS88
CV	COVER	CS89
CV	COVER	CS90
CV	COVER	CS91
CV	COVER	CS92
CV	COVER	CS93
CV	COVER	CS94
CV	COVER	CS95
CV	COVER	CS96
CV	COVER	CS97
CV	COVER	CS98
CV	COVER	CS99
CV	COVER	CS100

SITE INFORMATION

PROJECT NAME: ELK RIDGE UT HERITAGE 23-2
ADDRESS: 11200 ROCKY MOUNTAIN WAY, ELK RIDGE, UT 84651
PANEL: 4 (2024-001)
ENTRY: 11/20/2023
SIZE: 4.13 ACRES (17982.3 SQ FT)
OWNER: CHURCH OF JESUS CHRIST OF LATTER DAY SAINTS
ZONE: PUBLIC FACILITY

OWNER

CHURCH OF JESUS CHRIST OF LATTER DAY SAINTS
575 E. Temple St. Salt Lake City, UT 84150
JAMES DENKEU
(801) 240-5174
jdenkeu@churchofjesuschrist.org

ARCHITECTURE

UNCOMMON ARCHITECTS
604 W. Center St. Moab, UT 84047
DARIN MANO
(801) 533-5273
dmano@uncommonarch.com

CIVIL

MICHEL ENGINEERING
1000 N. Main St. Suite 200, Sandy, UT 84070
DANIEL CANNING
(801) 533-5273
dcanning@mcengineering.com

STRUCTURAL

FOCUS ENGINEERING
1000 N. Main St. Suite 200, Moab, UT 84047
ADAM EASTMAN
(801) 533-5273
aeastman@focusdsh.com

LANDSCAPE

MICHEL ENGINEERING
1000 N. Main St. Suite 200, Sandy, UT 84070
SCOTT "SM" SCHOONOVER
(801) 533-5273
sschoonov@mcengineering.com

MECHANICAL

SPECTRUM ENGINEERS
1000 N. Main St. Suite 400, Salt Lake City, UT 84111
CARL GATRELL
(801) 533-5273
cgatrell@spectrumg.com

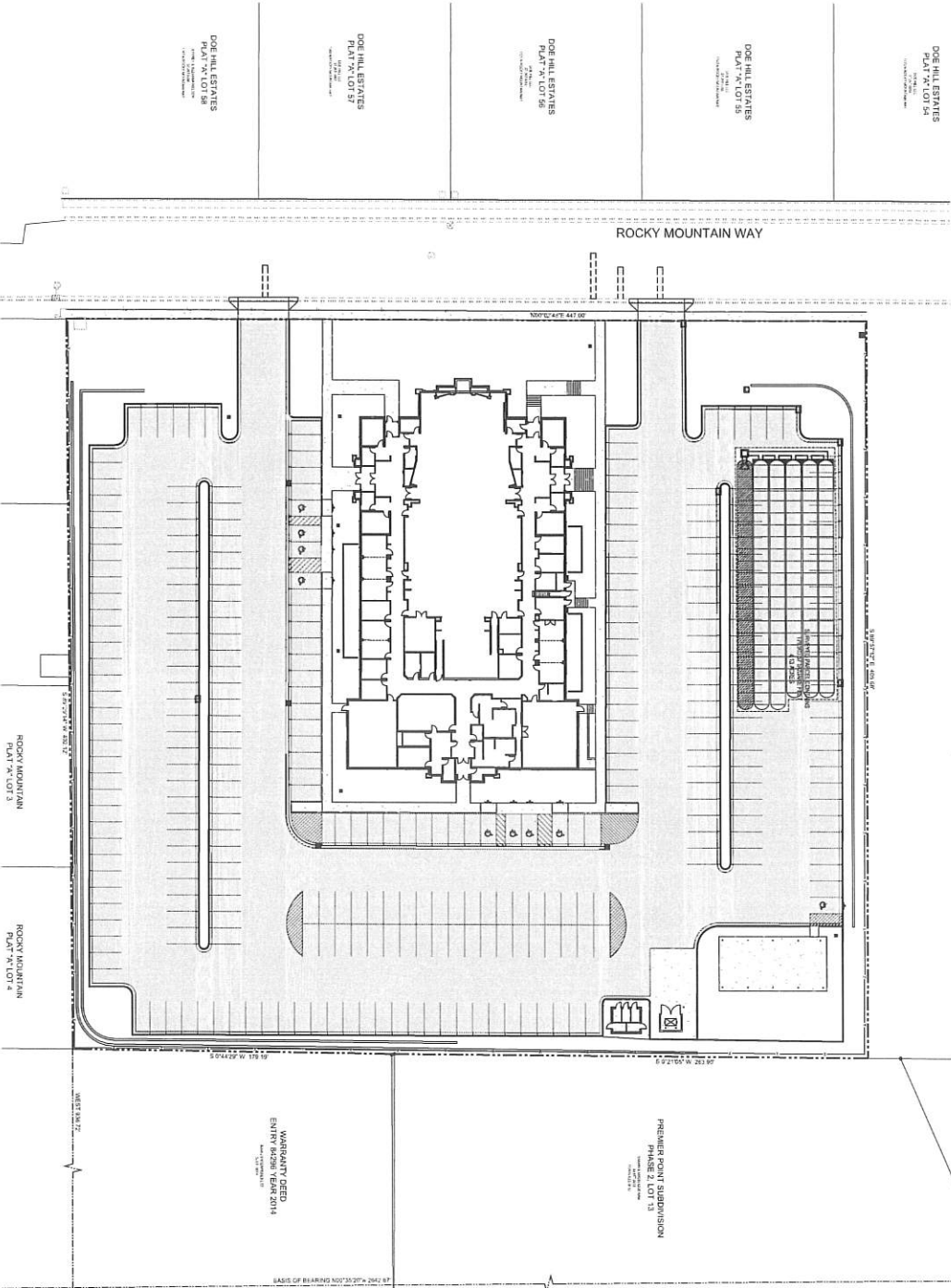
ELECTRICAL

SPECTRUM ENGINEERS
1000 N. Main St. Suite 400, Salt Lake City, UT 84111
DAVID HINCHLEY
(801) 533-5273
dhinchley@spectrumg.com



ELK RIDGE, UTAH LDS STAKE CENTER

1120 ROCKY MOUNTAIN WAY, ELK RIDGE, UTAH COUNTY 84651



DRAWING INDEX	
NUMBER	DESCRIPTION
1	GENERAL NOTES
2	FOUNDATION
3	CONCRETE
4	STEEL
5	MECHANICAL
6	ELECTRICAL
7	LANDSCAPE
8	WATER
9	SEWER
10	FINISHES
11	PAINTS
12	GLASS
13	DOORS
14	WINDOWS
15	ROOFING
16	CLADDING
17	LANDSCAPE
18	WATER
19	SEWER
20	FINISHES
21	PAINTS
22	GLASS
23	DOORS
24	WINDOWS
25	ROOFING
26	CLADDING
27	LANDSCAPE
28	WATER
29	SEWER
30	FINISHES
31	PAINTS
32	GLASS
33	DOORS
34	WINDOWS
35	ROOFING
36	CLADDING
37	LANDSCAPE
38	WATER
39	SEWER
40	FINISHES
41	PAINTS
42	GLASS
43	DOORS
44	WINDOWS
45	ROOFING
46	CLADDING
47	LANDSCAPE
48	WATER
49	SEWER
50	FINISHES
51	PAINTS
52	GLASS
53	DOORS
54	WINDOWS
55	ROOFING
56	CLADDING
57	LANDSCAPE
58	WATER
59	SEWER
60	FINISHES
61	PAINTS
62	GLASS
63	DOORS
64	WINDOWS
65	ROOFING
66	CLADDING
67	LANDSCAPE
68	WATER
69	SEWER
70	FINISHES
71	PAINTS
72	GLASS
73	DOORS
74	WINDOWS
75	ROOFING
76	CLADDING
77	LANDSCAPE
78	WATER
79	SEWER
80	FINISHES
81	PAINTS
82	GLASS
83	DOORS
84	WINDOWS
85	ROOFING
86	CLADDING
87	LANDSCAPE
88	WATER
89	SEWER
90	FINISHES
91	PAINTS
92	GLASS
93	DOORS
94	WINDOWS
95	ROOFING
96	CLADDING
97	LANDSCAPE
98	WATER
99	SEWER
100	FINISHES

ALL WORK AND MATERIALS FOR WATER MUST CONFORM TO CITY OF ELK RIDGE PUBLIC WORKS STANDARDS AND SPECIFICATIONS

ALL WORK AND MATERIALS FOR SEWER MUST CONFORM TO ELK RIDGE UTILITY DEPARTMENT STANDARDS AND SPECIFICATIONS

ALL WORK AND MATERIALS MUST CONFORM TO APWA STANDARDS AND SPECIFICATIONS

OWNER

ARCHITECTURE

UNCOMMON ARCHITECTS
4400 S. Jordan, UT 84009
BRITANY WHITE JOHNSON
(801) 417-8851
britany@uncommonarch.com

CIVIL

MOORE ENGINEERING
8610 Sandy Pkwy Suite 200, Sandy,
UT 84070
DANIEL CANNING
(801) 255-7700
daniel@mooreeng.com

STRUCTURAL

FOCUS ENGINEERING
6908 High Tech Dr Suite 200, Midvale,
UT 84047
ADAM EASTMAN
(801) 255-0075
adam@focusut.com

LANDSCAPE

MOORE ENGINEERING
8610 Sandy Pkwy Suite 200, Sandy,
UT 84070
SCOTT S. SCHOONOVER
(801) 255-7700
scott@mooreeng.com

MECHANICAL

SPECTRUM ENGINEERS
324 S State St Suite 400, Salt Lake
City, UT 84111
JAMIE MCQUILLICH
(801) 678-7077
jamie@speceng.com

ELECTRICAL

SPECTRUM ENGINEERS
324 S State St Suite 400, Salt Lake
City, UT 84111
DAVID HINCKLEY
(801) 678-7077
david@speceng.com

CONTRACTOR

T.B.D.



MOORE ENGINEERING
Professional Engineer
Daniel Canning
Contact Info:
8610 Sandy Pkwy Suite 200, Sandy, UT 84070
(801) 255-7700
daniel@mooreeng.com

ELK RIDGE UT HERITAGE 23-2
1120 ROCKY MOUNTAIN WAY
ELK RIDGE, UTAH COUNTY, UTAH 84651

JOB NUMBER: S13-008
OWNER: City of Elk Ridge
DATE: 02.12.2024
REV: DATE DESCRIPTION

CIVIL COVER

C0.00