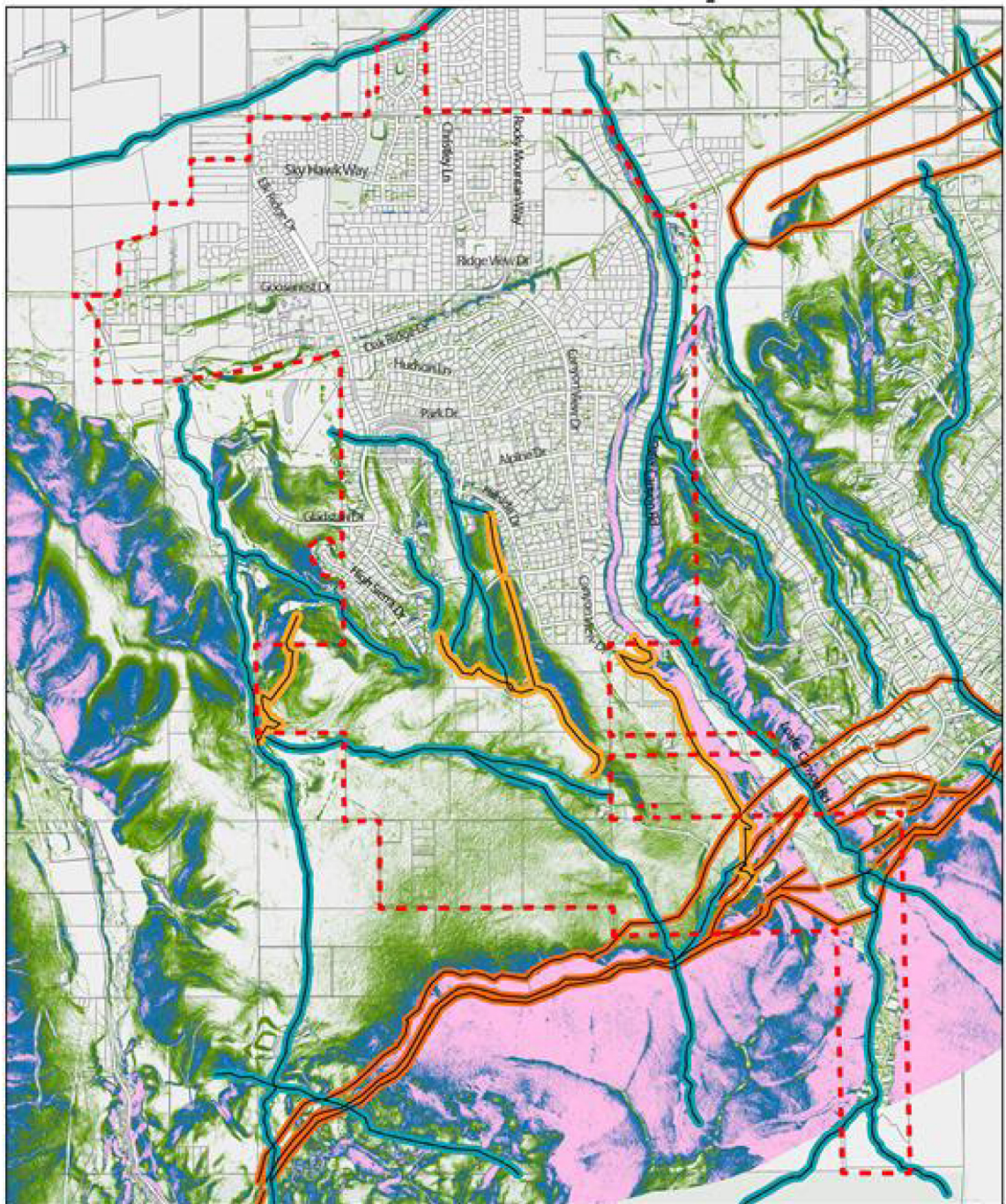


# Sensitive Areas Map



- Elk Ridge City Boundary
- Ridgeline
- Ravine/Drainage
- Fault Lines

- Slope (%)**
- <10
  - 10 - 15
  - 15 - 20
  - 20 - 30
  - >30



0 0.25 0.5 1 Miles

*Produced by Horrocks Engineers Staff*

Slope data source: 0.5 Meter LIDAR data captured in 2013-2014 taken from the Utah Geospatial Resource Center (UGRC) website. This is the most recent and accurate data available.

**\*All features must be verified at the time of development**