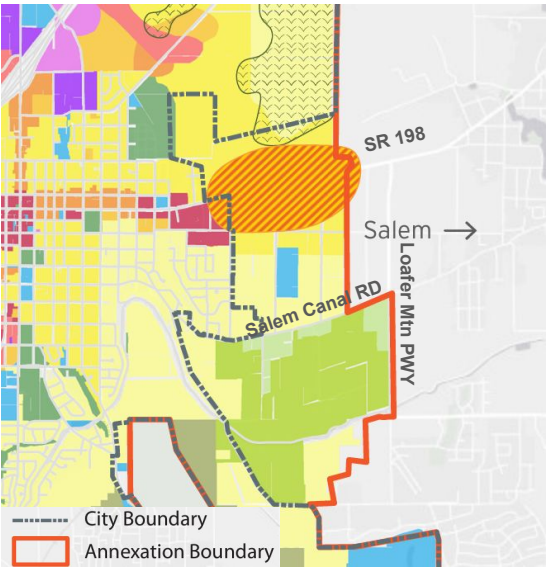


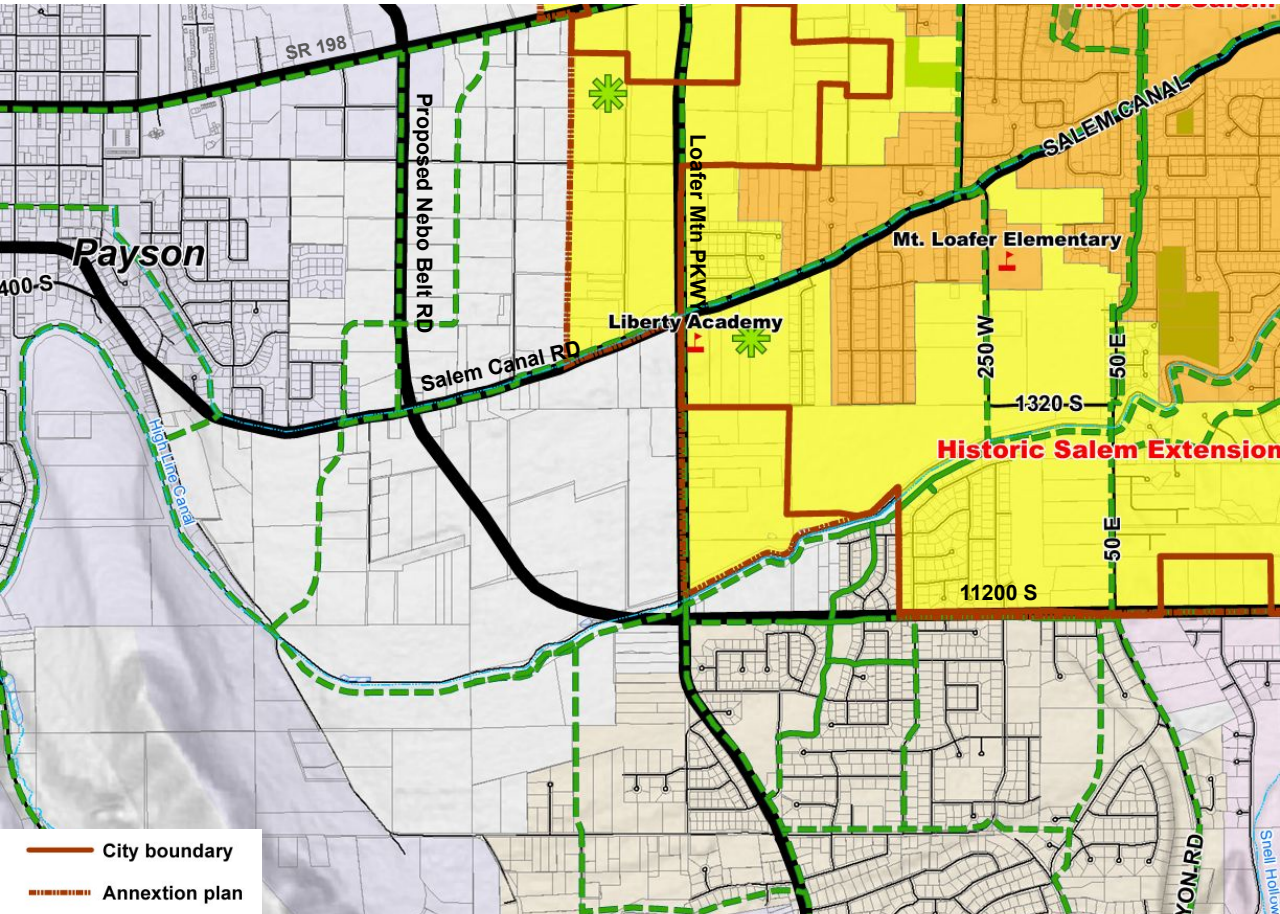
Payson Annexation Map



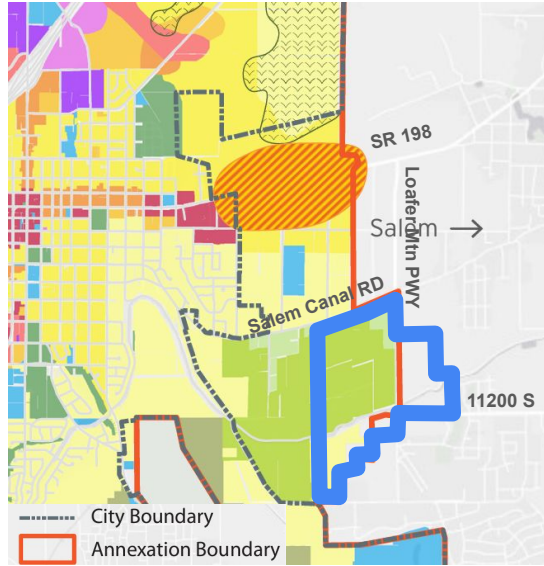
Both Payson and Salem annexation areas abut each other

Elk Ridge annexation potential to SR 198 is difficult since Payson and Salem city limits already almost touch here (shown on Salem map, Payson purple, Salem yellow with solid red outline)

Salem Annexation Map



Payson Annexation Map with  
Proposed Elk Ridge Annexation Area



Proposed Elk Ridge Annexation area in blue

- Allows for commercial development at the four corners of 11200 S/Loafer Mtn PKWY, along portion of proposed Nebo Belt RD, and along portion of Loafer Mtn PKWY
- Allows Payson to retain four corners of Salem Canal RD/Nebo Belt RD for development.

Salem Annexation Map with Proposed Elk Ridge Annexation Area

