

February 19, 2025

Elk Ridge City
Attn: Mayor Robert Haddock
80 E. Park Drive
Elk Ridge, UT 84651

Re: Temporary Sales Office at the Highlands at Elk Ridge

Dear Mayor Haddock:

As you may be aware, Toll Brothers is purchasing the remaining twenty-four lots in the Highlands at Elk Ridge Subdivision, and we are very excited to build our luxury homes in your beautiful city. We plan to commence shortly with building a large model home to showcase our homes to our homebuyers. The attached pages illustrate some of the homes we build, and the attention to architecture and quality that we include in our homes.

While the model home is being built on Lot 75, we wish to install a Sales Office for six months on Lot 74, like the Sales Office illustrated in the attached pages. This is not simply a trailer parked on-site. Rather, it is a semi-permanent structure flush with the ground, surrounding by landscaping, concrete flatwork, and a shaded entry structure. If helpful to further illustrate, it would be similar to the sales center used at Summit Creek in Woodland Hills, except our sales office will be much nicer. We do things first-class, representative of the homes we build. Again, this is only a 6-month request until our model is complete, at which point the Sales Office and surrounding landscaping and flatwork will be completely removed.

We look forward to the opportunity of speaking with you and the City Council about this request, as well as to a great working relationship for years to come in beautiful Elk Ridge.

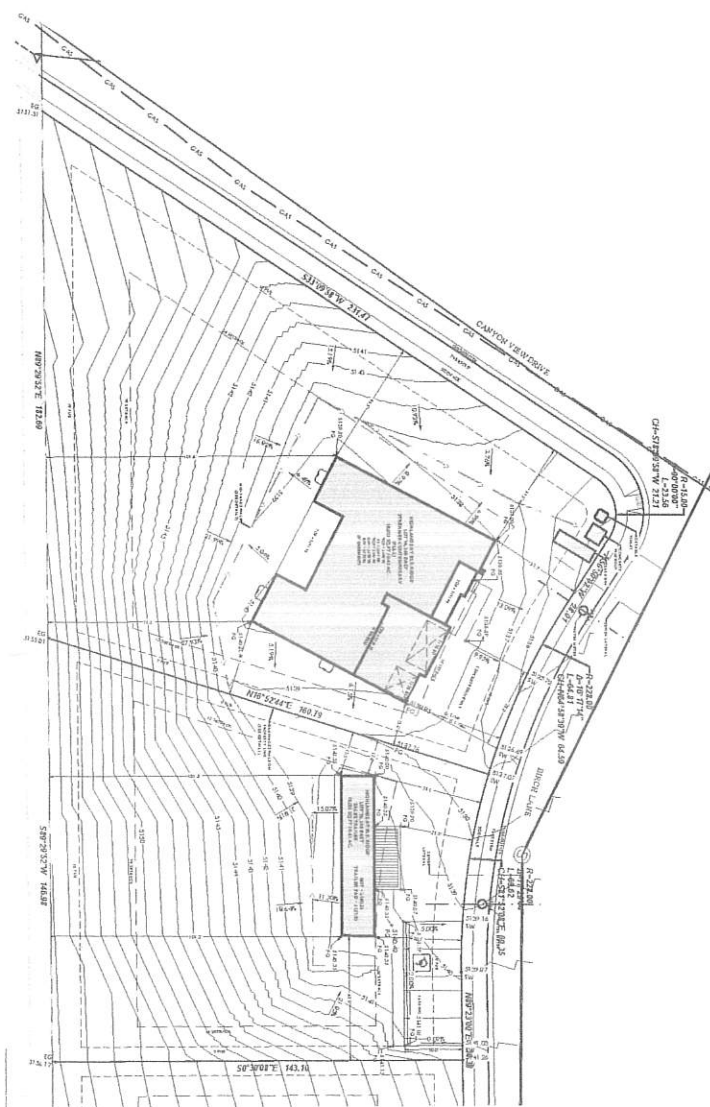
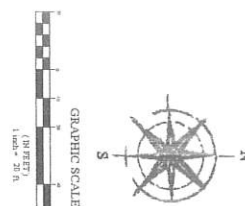
Sincerely,



Dan Reeve

Director of Land Acquisition

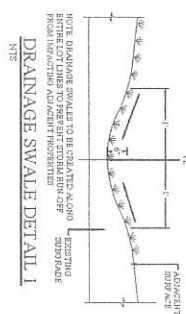
dr, enclosures

[illegible]

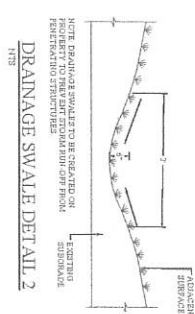
LEGEND:
 PF = FINISHED FLOOR
 TIS = TOP OF FOUNDATION
 TOP = TOP OF POORH
 OFB = BASEMENT FLOOR
 BEF = BASEMENT FINISHED FLOOR
 PO = FINISHED GRADE
 EG = EXISTING GRADE
 TBC = TOP BACK OF CURB
 BOW = BACK OF WALK

SETBACKS:
 FRONT - 3'

 SIDE - 12' W/ CORNER
 REAR - 30'



DRAINAGE SWALE DETAIL



DRAINAGE SWALE DETAIL 2

REVISION BLOCK		
#	DATE	DESCRIPTION
1	10/1/00	10/1/00
2	10/1/00	10/1/00
3	10/1/00	10/1/00
4	10/1/00	10/1/00
5	10/1/00	10/1/00
6	10/1/00	10/1/00

HIGHLANDS AT ELK RIDGE
LOTS 74 & 75
MODEL HOME & SALES TRAILER
586-598 EAST BIRCH LANE, ELK RIDGE, UTAH
SITE PLAN

